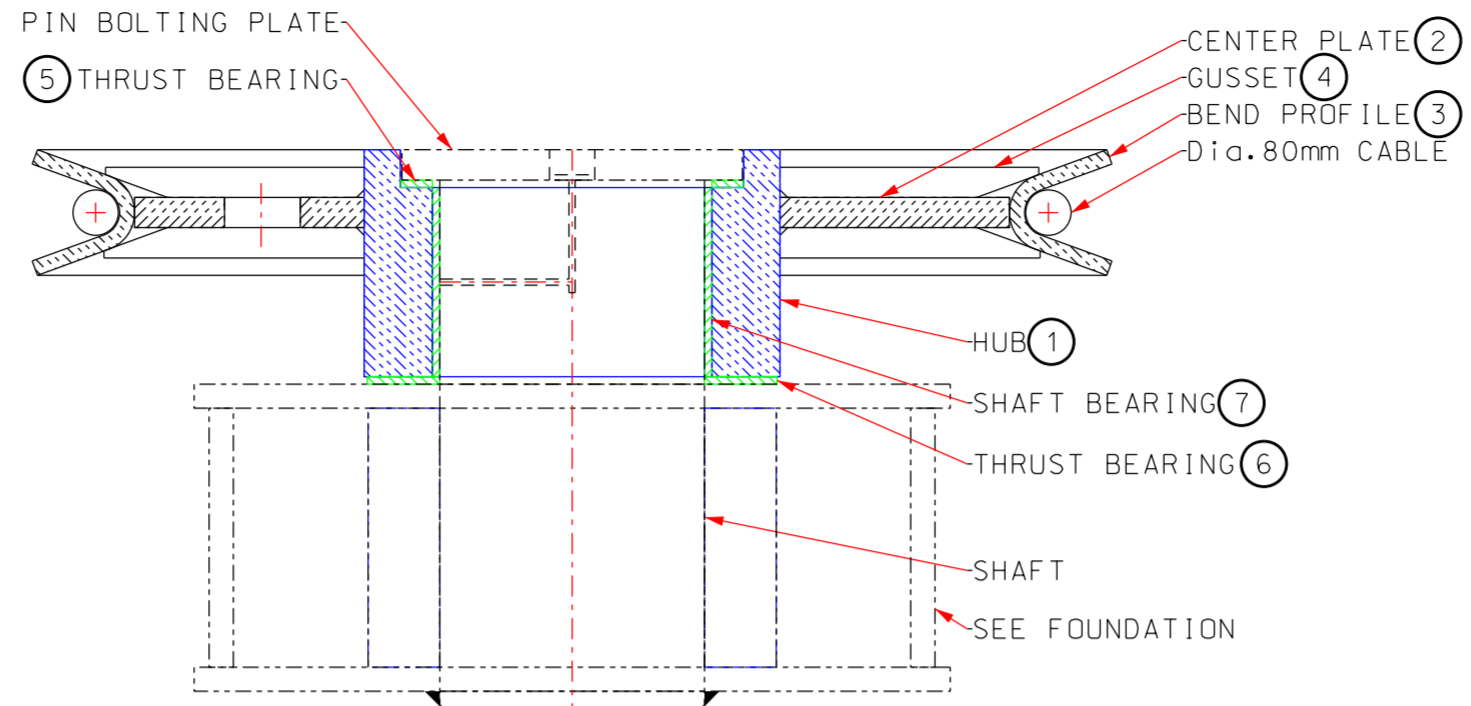
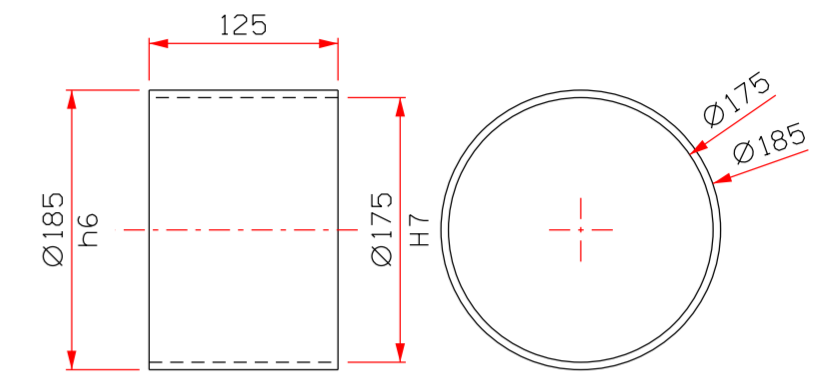


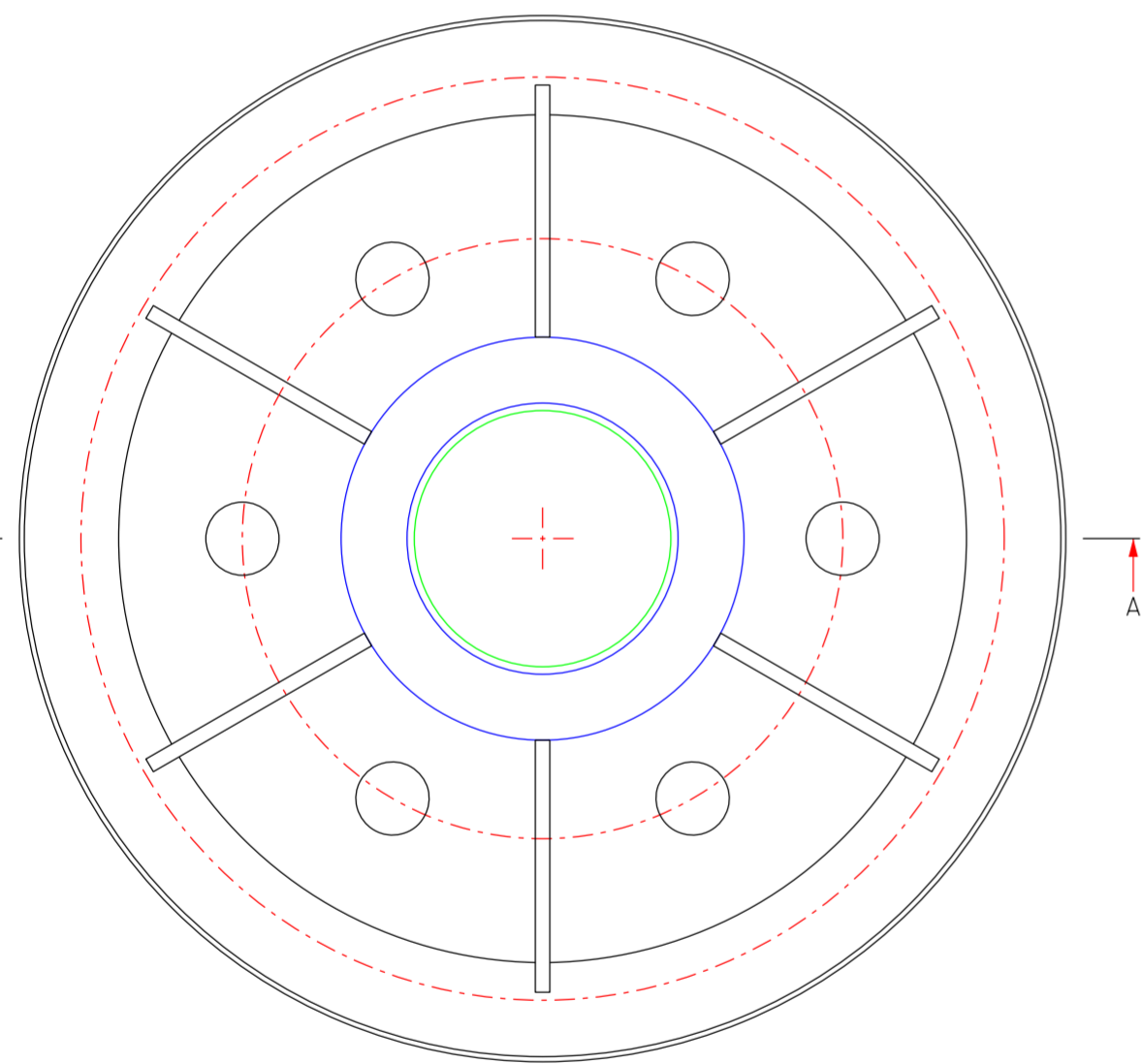
SECTION A-A



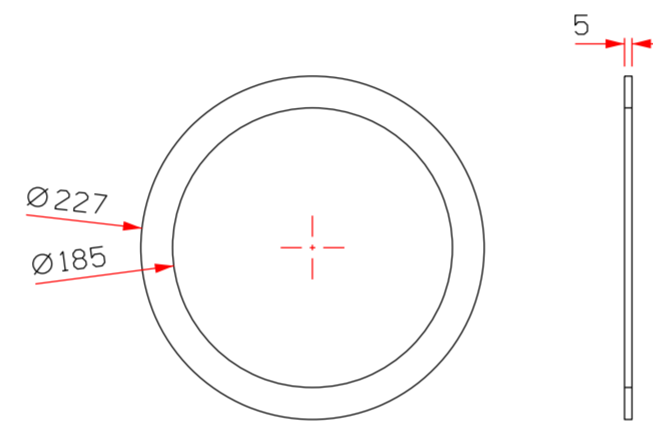
ASSEMBLY DETAIL



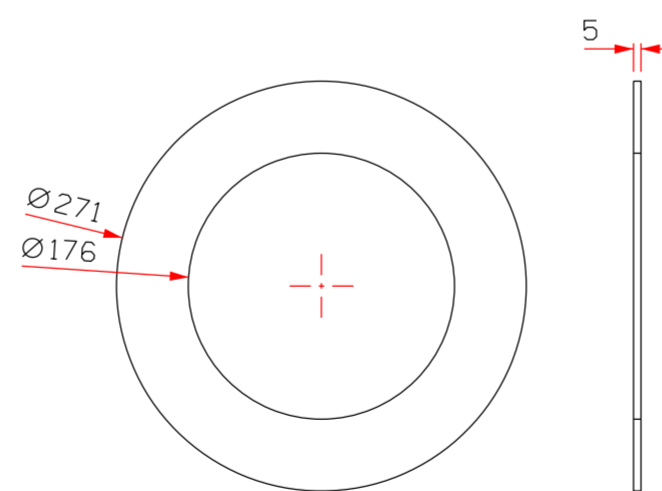
SHAFT BEARING (6)



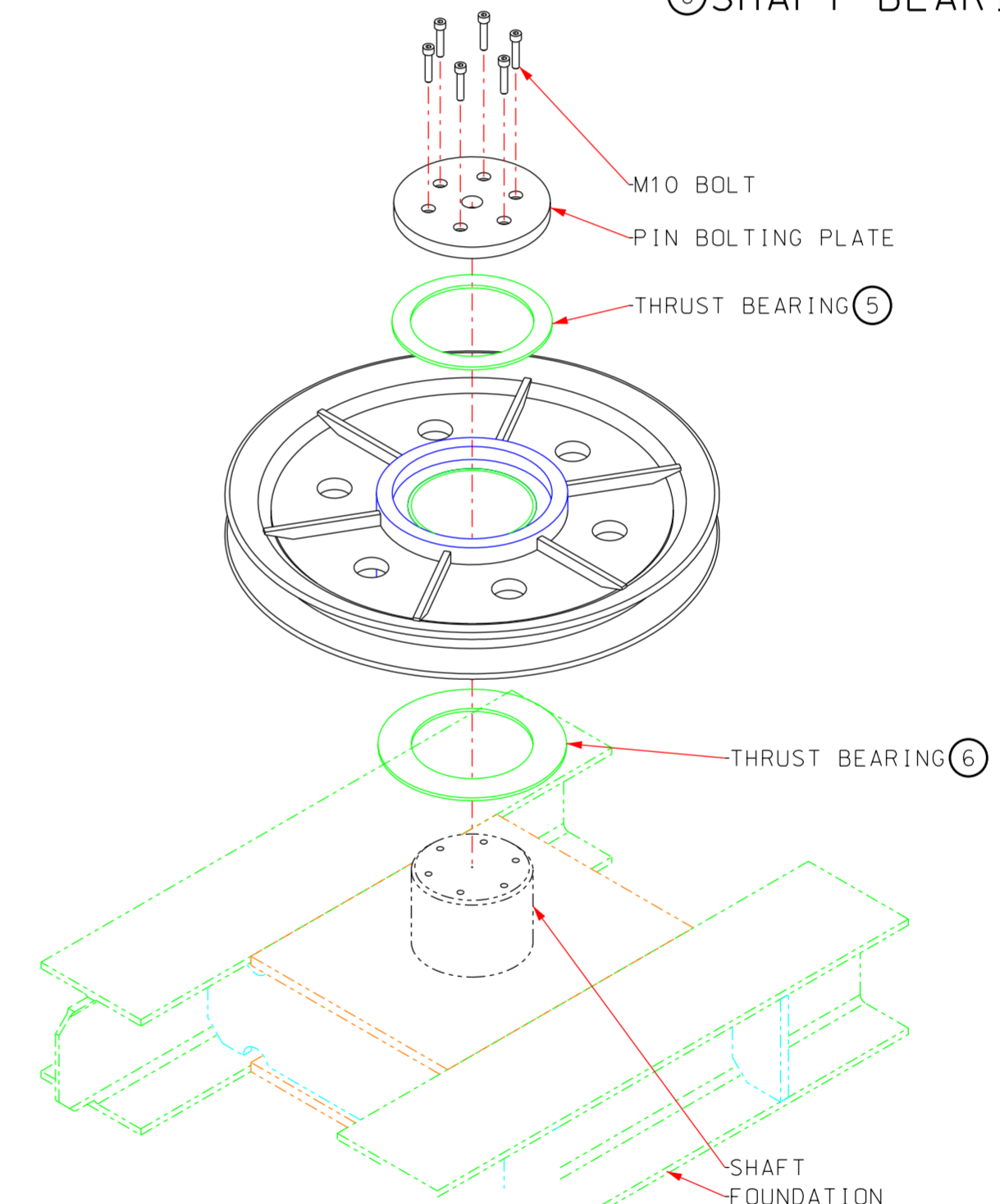
PLAN VIEW



THRUST BEARING (5)



THRUST BEARING (6)



ISO VIEW

ITEM	QTY.	DESCRIPTION	MATERIAL
1	1	HUB OD.275mm, ID.185mm x 150mm THK	S355JR
2	1	CTR PLATE OD.579mm, ID.275mm x 20mm THK	S355JR
3	1	BEND PROFILE PLATE 2250x170x10mm	S355JR
4	12	GUSSET PLATE 170x20x10mm	S355JR
5	1	THRUST BEARING OD.227mm, ID.185mm L=5mm	LUB-MET
6	1	THRUST BEARING OD.271mm, ID.176mm L=5mm	LUB-MET
7	1	SHAFT BEARING OD.110mm, ID.100mm L= 150mm	LUB-MET

ABOVE QUANTITIES ARE FOR ONE SHEAVE SET. WEIGHT: 115Kg

DRAWING NO.	REFERENCE	NO.	DESCRIPTION	BY	CHKD	APPD	DATE
1002-001-4009	DOWN HAUL SHEAVE FOUNDATION	A	NEW DWG NUMBER TO SUITE DWG LIST.	BB	PCV		19/6/18

TRANSNET
national ports authority

Naval Africa
NAVAL ARCHITECTURE
Ocean Engineering Services

TEL NO: +27 31 205 3147
FAX NO: +27 31 205 2410
WEBSITE: www.davalor188.co.za

CLIENT			MAIN CONSULTANT		
TITLE	NAME	DATE	TITLE	NAME	DATE
			DRAWN	BENNE B	06/12/17
			CHECKED	BERNARD G	06/12/17
			PROJ. MGR.		
			ENG. COORD		
			ARCHI. ENGR.		
			ELEC. ENGR.		
			MECH. ENGR.		
			STRUCT. ENGR.		
			CIVIL ENGR.		
			INSTRU. ENGR.		
			PROC. ENGR.		

LUDMANN
EST. 2015

PROJECT No. TNPA 670
UPGRADE OF EXISTING SHIP REPAIR FACILITIES AT THE PORT OF MOSSEL BAY
BACK HAUL SHEAVE WHEEL

APPROVED BY
NAME: P.C. VOLSCHENK
SIGNATURE: [Signature]
DATE: 06/12/17
REG. NUMBER: 820381

SCALE: 1:5
DATE: 06/12/17
Drawing Number: 1002-001-4008
CLIENT Drawing Number: A
Sheet size: A2
Status: ISSUED FOR CONSTRUCTION